

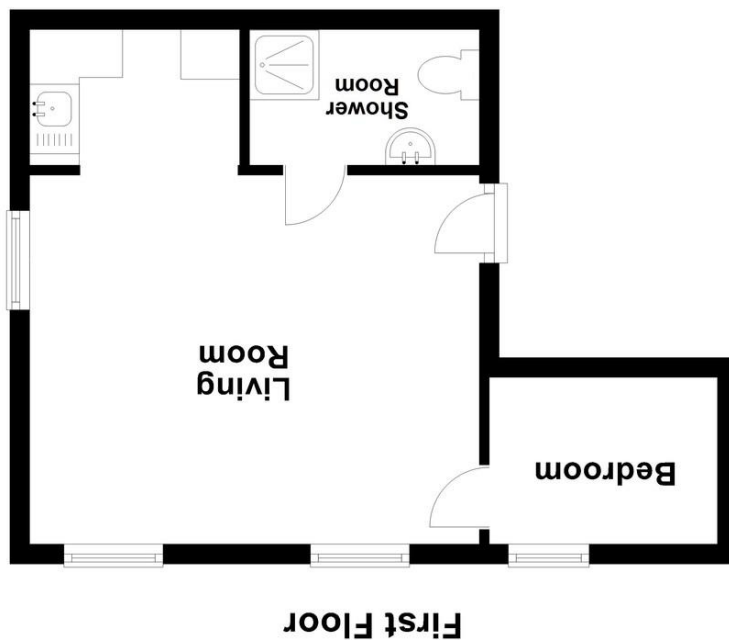


**OFFICE**  
 49 Hyde Road, Paignton,  
 Devon, TQ4 5BP  
 01803 521111 | info@propertyladderdevon.com  
 propertyladderdevon.com

Agents Note: Whilst every care has been taken to prepare these particulars, they are for guidance purposes only. All measurements are approximate and are for general guidance purposes only and whilst every care has been taken to ensure their accuracy, they should not be relied upon and potential buyers/tenants are advised to recheck the measurements



This plan is to be used only as an indication of the floor layout and is not to scale. Plan produced using PlanUp.



**How much is your house worth?**  
**It may be more than you think!**  
**Book your free no obligation valuation today with Property Ladder.**  
**Your Local Real Estate Agents.**

CMP  
 The Property Ombudsman  
 Zoopla rightmove



**6 BAYSIDE VILAS, 22 SANDS ROAD PAIGNTON, TQ4 6EG £500 PCM**

Available from 18th September. A compact first floor flat located just off Paignton Sea Front and Esplanade. It offers 1 Bedroom, Open Plan Living Room, Kitchen and Shower room. Benefits include some Double Glazing and communal Gas Central Heating. Ideal for a working couple or a single person. Well presented throughout. Off road parking. Rent includes Heating. Ideal for access to the Sea Front & The Town Centre. Sorry no Pets or Smokers.



## 6 BAYSIDE VILLAS

First Floor Flat | Sea View | 1 Bedroom |  
Living Room | Kitchen | Communal  
Central Heating | Off Road Parking |  
Close to the Sea Front & Town Centre |  
Rent Includes C/Heating |  
Regret No Smokers or Smokers



### ACCOMMODATION

Communal front door.

### ENTRANCE HALLWAY

Stairs rise to the first floor. Front door to :-

### LIVING ROOM

14' 10" x 12' 2" (4.53m x 3.71m) Window to the front of the property with views down across the Esplanade with the Sea in the distance. Windows to the side of the property. Open plan to :-

### KITCHEN AREA

6' 9" x 4' 6" (2.06m x 1.38m) Range of floor mounted units with rolled edge worksurfaces and tiled splash back. Single drainer stainless steel sink. Electric cooker point. Useful shelving. Space for fridge/freezer.

### BEDROOM

7' 6" x 5' 6" (2.30m x 1.69m) UPVC double glazed window to the side of the property.

### SHOWER ROOM

7' 5" x 3' 10" (2.28m x 1.18m) Pedestal wash hand basin. Low level WC. Tiled shower cubicle with fitted electric shower. Mirror fronted medicine cabinet. Shaver light and point. Tiled walls.

### OUTSIDE

Parking space.

### AGENTS NOTES

The rent includes central heating. Prospective tenants must have good all round references and be able to show a gross earned income of circa £15,000 per annum. SORRY NO SMOKERS OR PETS

## 6 BAYSIDE VILLAS

